

# OUTCOMES ASSESSMENT

# 2010



**TRACY BARNES**  
CSU Student



# COLUMBIA SOUTHERN UNIVERSITY

# YOU CAN. YOU WILL.

*They did!*

Firefighters, police officers, military personnel and even an Olympic athlete were able to make education work in their busy lives by enrolling with CSU. With responsibilities such as family, friends and career, CSU knows your availability is limited. That's why we offer online degree programs that can be customized to fit your existing routine. Forget the days of scheduled online sessions, impossible deadlines or mandatory group projects. Every year, thousands of CSU students complete degrees without having to put their lives on hold.



**MARK MILLS**  
2009 CSU Graduate



**AMI SMITH**  
2011 CSU Graduate

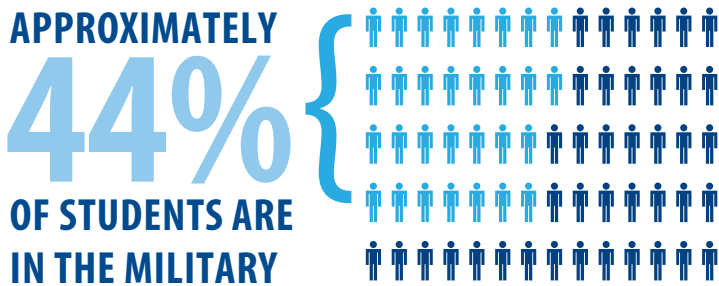
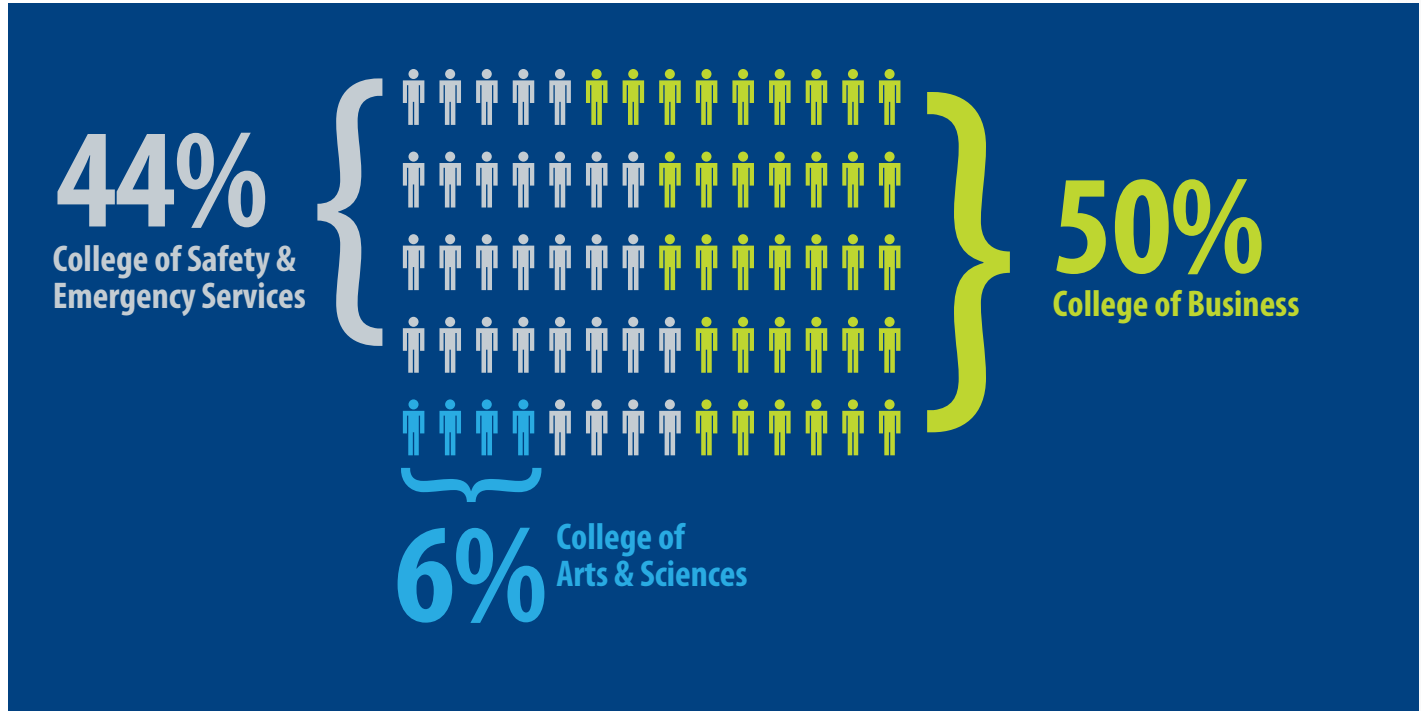


**MARC GREENFIELD**  
2011 CSU Graduate



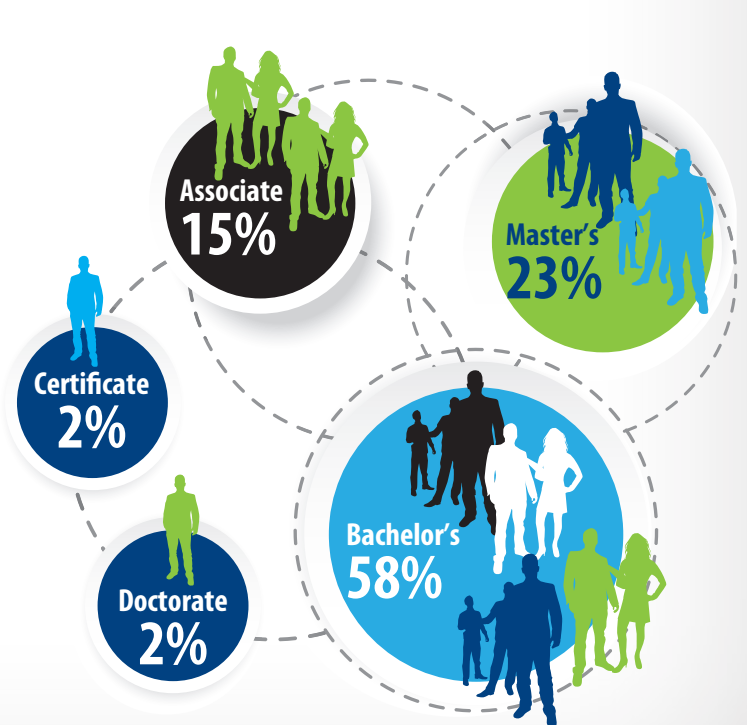
# STUDENT DEMOGRAPHICS 2010

## PERCENTAGE OF STUDENTS PER COLLEGE



**LARGEST AGE GROUP** 31-40 YEARS OLD

## PERCENTAGE OF STUDENTS PER DEGREE LEVEL



# STUDENT SATISFACTION



PERCENTAGE OF  
**2010**  
GRADUATES WHO  
ANSWERED

“**YES**”

TO THE FOLLOWING  
QUESTIONS:

**1**

Did you achieve, or will you have achieved upon completing your studies, the goals you had when you started the course or program?

Approximately  
**97%**  
Undergraduate Students

Approximately  
**98%**  
Graduate Students

**2**

Would you recommend these studies to a friend?

Approximately  
**99%**  
Undergraduate Students

Approximately  
**99%**  
Graduate Students

**3**

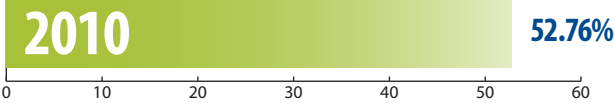
All things considered, were you satisfied with your studies at Columbia Southern University?

Approximately  
**99%**  
Undergraduate Students

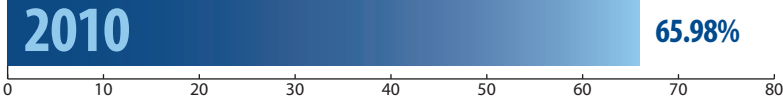
Approximately  
**99%**  
Graduate Students

# 2010 GRADUATION RATES

## UNDERGRADUATE



## GRADUATE



**WILLIAM & ANGELA PAYNE**  
2010 CSU Graduates

## QUESTIONS TO ALUMNI

### Percent Answering "YES"

Are you currently employed in your discipline of study?	69%
Were you employed in your field of study while pursuing your degree at CSU?	74%
Were you employed in your field of study within 180 days of graduating from CSU and employed for at least 13 weeks? If you were already employed in your field of study while pursuing your degree at CSU, please select "Yes" to this question.	77%
Did you professionally benefit from your studies at CSU through enhanced knowledge, skills, and abilities?	90%
Did you attend CSU for the purpose of employment and/or promotional opportunities?	88%
Did your degree/certificate from CSU contribute to securing a promotion in your field?	46%
Did your degree/certificate from CSU contribute to securing employment in your field?	40%
After graduating from CSU, did you attend another institution besides CSU for the purpose of receiving a higher degree?	12%
Did you pursue your higher degree in the same field as your degree from CSU? (If you did not pursue a higher degree, please select NA.)	61% Of those who pursued a higher degree

### Graduates of CSU report they are currently employed by organizations such as:

American Society of Clinical Pathology	Industrial Hygiene Professionals, Inc.	State of Alabama Board of Pardons and Paroles
Anchorage Fire Department	L-3 Communications	Tennessee Valley Authority
Bank of America	MD Anderson Cancer Center	The Boeing Company
Becthtel International	National Park Service	The Home Depot
Booz Allen Hamilton	New York City	Toyota Financial Services
Center for Naval Analysis	New York Life	United States Air Force
Chevron Phillips	Northrop Grumman	United States Army
Citrix Systems, Inc.	Occupational Safety and Health Administration	United States Coast Guard
City of Albany, Georgia	Pennsylvania Department of Corrections	United States Department of Defense
Computer Sciences Corporation	Prince George's County Fire / EMS Department	United States Department of Housing and Urban Development
Conoco Phillips	Raleigh Police Department	United States Department of State
Dallas County Constable's Office	Raytheon	United States Department of Veterans Affairs
Delta Airlines	Red Wing Shoe Company	United States Marine Corps
FedEx	Regions Financial	United States Mint
Florida Department of Health, Environmental Health Division	Renewable Water Sources	United States Navy
Fulton County Sheriff's Office	Sacramento Metropolitan Fire District	Wal-Mart
General Dynamics	Sacred Heart Hospital	Washington State Department of Health
General Motors	Sara Lee Corporation	
Gwinnett County Fire and Emergency Services	Sherwin Williams	
Hampton Inn by Hilton	ShopRite Supermarkets	
Honeywell	Stanley Black and Decker	
Houston Fire Department	State Farm Insurance	

\* CSU does not offer job placement services.

# GRADUATION AND JOB PLACEMENT RATES PER DEGREE PROGRAM

(Calculated December 2011) \*

NAME OF DEGREE PROGRAM	GRADUATION RATE	JOB PLACEMENT RATE
AA in General Studies	48.08%	70%
AAS Business Administration	56.17%	81%
AAS Criminal Justice	45.79%	71%
AAS Fire Science	66.91%	90%
AAS Occupational Safety & Health	NA	79%
BS Business Administration (Includes concentrations)	37.53%	67%
BS Criminal Justice	40.09%	81%
BS Environmental Science	35.35%	55%
BS Fire Science	42.24%	94%
BS Health Care Administration	30.53%	70%
BS Hospitality and Tourism (Program no longer offered)	34.62%	75% **
BS Human Resource Management	36.26%	59%
BS Information Technology	35.37%	70%
BS Marketing (Program no longer offered)	19.05%	100% **
BS Occupational Safety & Health (Includes concentrations)	33.89%	77%
BS Organizational Leadership	NA	78% **
BS Psychology	NA	27% **
MBA (Includes concentrations)	63.32%	75%
MS Occupational Safety & Health (Includes concentrations)	47.28%	85%
MS Criminal Justice	39.17%	79%
MS Emergency Services Management	NA	78% **
MS Organizational Leadership	NA	83% **

\* Graduation and Job Placement Rates Detail:

Graduation rates were calculated within the "normal completion time" designated by the university: Associate: 3 years, Bachelor's: 5 years, Master's: 3 years.

Graduation rate population includes students who are deployed and those in current program. Graduation rate population does not include students who completed fewer than 6 hours.

The following degree programs were approved in 2006, 2007, 2008, or 2009 and, therefore, do not have graduation rates available at this time:

- |  |   |
|--|---|
| A.A.S. in Occupational Safety and Health (August 2009) | B.S. in Psychology (June 2007)                |
| B.S. in Organizational Leadership (July 2009)          | M.S. in Organizational Leadership (July 2009) |
| MS in Emergency Services Management (November 2008)    | Doctor of Business Administration (June 2006) |

Job placement rates were calculated from a survey conducted of all CSU graduates. Rate presented is the percentage of graduates who answered "Yes" to the question, "Were you employed in your field of study within 180 days of graduating from CSU and employed for at least 13 weeks? If you were already employed in your field of study while pursuing your degree at CSU, please select "Yes" to this question." Response rate ranged from 1-294. This study is on-going.

\*\* Response rate less than 20

# COMPLETION AND JOB PLACEMENT RATES PER CERTIFICATE PROGRAM

(Calculated December 2011) \*

NAME OF DEGREE PROGRAM	COMPLETION RATE	JOB PLACEMENT RATE
Industrial Hygiene Management Certificate	48.78%	100% ***
Certificate in Environmental Management	60%	50% ***
Certificate in Finance	100% **	No response
Certificate in Fire Science	66.67%	100% ***
Certificate in Hospitality and Tourism	0% **	No response
Certificate in Human Resource Management	46.67%	100% ***
Certificate in Information Technology	35%	No response
Certificate in International Management	66.67% **	No response
Certificate in Management	33.33% **	100% ***
Certificate in Marketing	100% **	No response
Certificate in Occupational Safety and Health	50%	100% ***
Certificate in Project Management	36.36%	0% ***
Certificate in Sport Management	33.33% **	No response
Graduate Certificate in Environmental Management	42.86%	100% ***
Graduate Certificate in Finance	100% **	0% ***
Graduate Certificate in Health Care Management	90%	100% ***
Graduate Certificate in Hospitality and Tourism	0% **	No response
Graduate Certificate in Human Resource Management	52.94%	50%
Graduate Certificate in International Management	0% **	No response
Graduate Certificate in Marketing	33.33% **	No response
Graduate Certificate in Occupational Safety and Health	63.64%	71%
Graduate Certificate in Project Management	88.24%	100% ***
Graduate Certificate in Public Administration	37.5%	No response
Graduate Certificate in Sport Management	60%	No response

\* Completion and Job Placement Rates Detail:

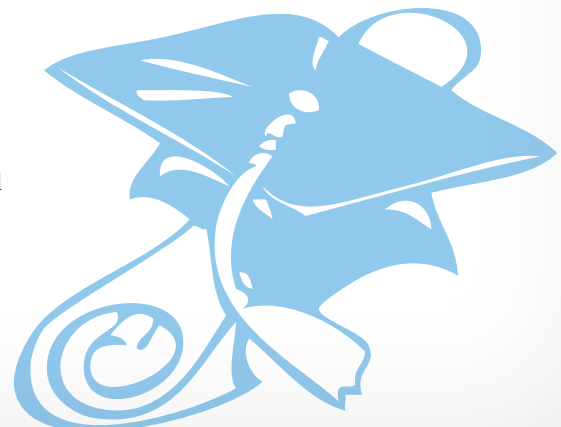
Completion rates were calculated within the “normal completion time” designated by the university: Certificate: 1.5 years.

Completion rate population includes students who are deployed and those in current program.

Job placement rates were calculated from a survey conducted of all CSU graduates. Rate presented is the percentage of completers who answered “Yes” to the question, “Were you employed in your field of study within 180 days of graduating from CSU and employed for at least 13 weeks? If you were already employed in your field of study while pursuing your degree at CSU, please select “Yes” to this question.” Response rate ranged from 1-7. This study is on-going.

\*\* Population less than 5

\*\*\* Response rate less than 5



**[www.ColumbiaSouthern.edu](http://www.ColumbiaSouthern.edu)**

**800.977.8449 | 251.981.3771**

**21982 University Lane**

**Orange Beach, Alabama 36561**